

**GCDFP-15 Antibody (C-term)**  
**Affinity Purified Rabbit Polyclonal Antibody (Pab)**  
**Catalog # AP11122B****Specification**

---

**GCDFP-15 Antibody (C-term) - Product Information**

Application	WB, IF, IHC-P,E
Primary Accession	<a href="#">P12273</a>
Other Accession	<a href="#">NP_002643.1</a>
Reactivity	Human
Host	Rabbit
Clonality	Polyclonal
Isotype	Rabbit IgG
Calculated MW	16572
Antigen Region	77-106

**GCDFP-15 Antibody (C-term) - Additional Information****Gene ID** 5304**Other Names**

Prolactin-inducible protein, Gross cystic disease fluid protein 15, GCDFP-15, Prolactin-induced protein, Secretory actin-binding protein, SABP, gp17, PIP, GCDFP15, GPIP4

**Target/Specificity**

This GCDFP-15 antibody is generated from rabbits immunized with a KLH conjugated synthetic peptide between 77-106 amino acids from the C-terminal region of human GCDFP-15.

**Dilution**

WB~~1:1000

IF~~1:10~50

IHC-P~~1:10~50

E~~Use at an assay dependent concentration.

**Format**

Purified polyclonal antibody supplied in PBS with 0.09% (W/V) sodium azide. This antibody is purified through a protein A column, followed by peptide affinity purification.

**Storage**

Maintain refrigerated at 2-8°C for up to 2 weeks. For long term storage store at -20°C in small aliquots to prevent freeze-thaw cycles.

**Precautions**

GCDFP-15 Antibody (C-term) is for research use only and not for use in diagnostic or therapeutic procedures.

**GCDFP-15 Antibody (C-term) - Protein Information**

**Name** PIP

**Synonyms** GCDFP15, GPIP4

**Cellular Location**  
Secreted.

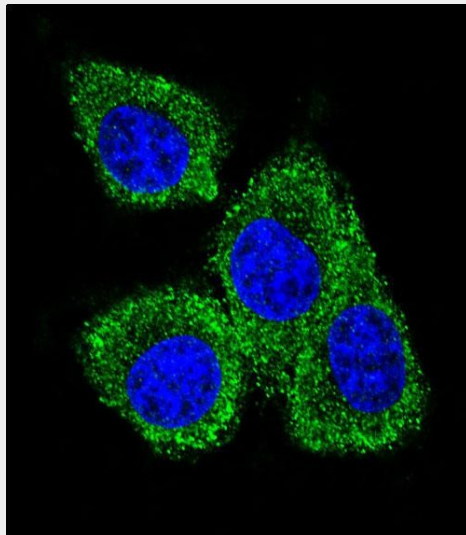
**Tissue Location**  
Expressed in pathological conditions of the mammary gland and in several exocrine tissues, such as the lacrimal, salivary, and sweat glands

### **GCDFP-15 Antibody (C-term) - Protocols**

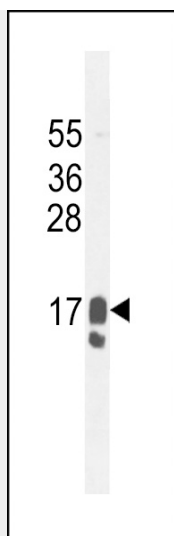
Provided below are standard protocols that you may find useful for product applications.

- [Western Blot](#)
- [Blocking Peptides](#)
- [Dot Blot](#)
- [Immunohistochemistry](#)
- [Immunofluorescence](#)
- [Immunoprecipitation](#)
- [Flow Cytometry](#)
- [Cell Culture](#)

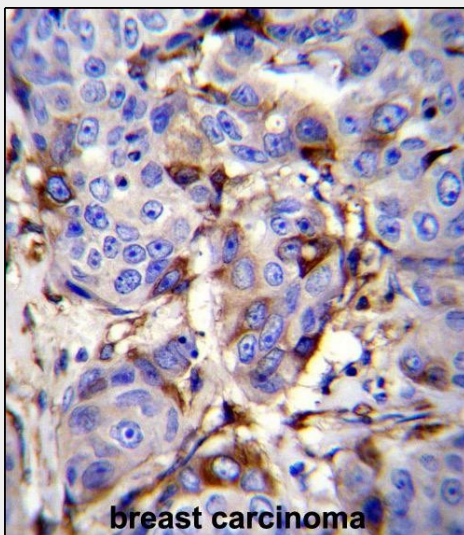
### **GCDFP-15 Antibody (C-term) - Images**



Confocal immunofluorescent analysis of GCDFP-15 Antibody (C-term) (Cat#AP11122b) with MDA-MB231 cell followed by Alexa Fluor 488-conjugated goat anti-rabbit IgG (green). DAPI was used to stain the cell nuclear (blue).



GCDFP-15 Antibody (C-term) (Cat. #AP11122b) western blot analysis in MDA-MB231 cell line lysates (35ug/lane). This demonstrates the GCDFP-15 antibody detected the GCDFP-15 protein (arrow).



GCDFP-15 Antibody (C-term) (Cat. #AP11122b) immunohistochemistry analysis in formalin fixed and paraffin embedded human breast carcinoma followed by peroxidase conjugation of the secondary antibody and DAB staining. This data demonstrates the use of GCDFP-15 Antibody (C-term) for immunohistochemistry. Clinical relevance has not been evaluated.

#### **GCDFP-15 Antibody (C-term) - Background**

Catalyzes the addition of fucose in alpha 1-6 linkage to the first GlcNAc residue, next to the peptide chains in N-glycans.

#### **GCDFP-15 Antibody (C-term) - References**

- Bryborn, M., et al. Allergy 65(2):220-228(2010)
- Wang, L.J., et al. Appl. Immunohistochem. Mol. Morphol. 17(6):505-511(2009)
- Yan, Z., et al. Diagn. Cytopathol. 37(7):475-478(2009)
- Debily, M.A., et al. PLoS ONE 4 (3), E4696 (2009) :
- Hassan, M.I., et al. J. Mol. Biol. 384(3):663-672(2008)